

HLDA9 ANTIBODY VALIDATION FILE

ANTIBODY INFORMATION

Antibody Name: E3

Specificity: CD307a, Human FCRL1

Antibody species: Mouse

Ig Isotype: IgG1 (kappa)

Immunogen: DNA-immunization followed by a boost with the FcRL1 transfected cells.

Epitope recognized: Topographical epitope I in the extracellular domain.

Submitter: Satoshi Nagata and Ira Pastan (Cancer Biology Research Center, Sandford Research. USA).

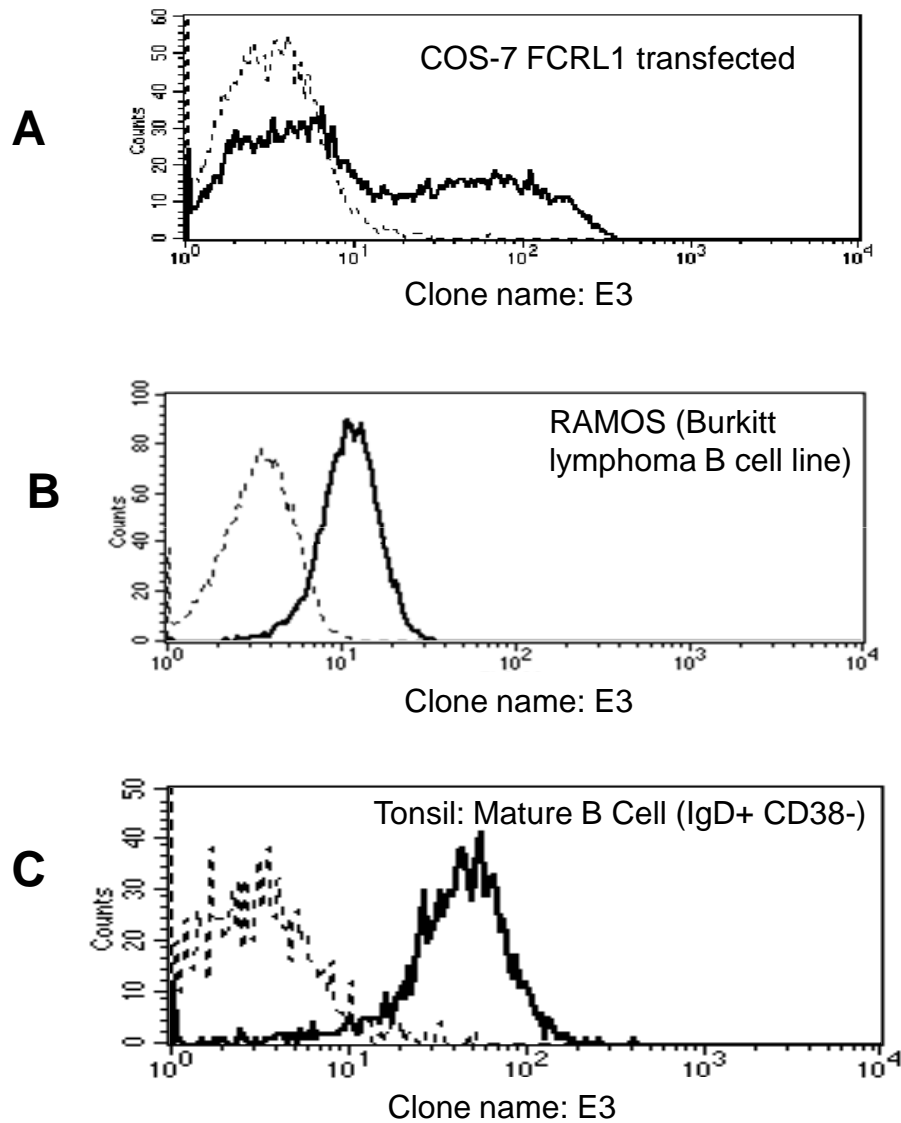
INFORMATION FOR CONFIRMATION OF SPECIFICITY:

Expression on transfected COS: positive. (Fig. 1A)

Expression on the cell- surface of cell line: positive with Burkitt lymphoma B cell lines Ramos and Rec-1. (Fig. 1B)

Expression on cell- surface of normal cell: positive with tonsil Mature B cells (IgD+ CD38-). (Fig. 1C)

Figure 1



Reactivity of CD307a with cell lines

	Cell lines	CD307a
EBV-transformed B cell lines	CESS	+
Burkitt lymphoma B cell lines	Raji	-
	Daudi	-
	Namalwa	-
	Ramos	+++
	REC-1	++++
Multiple myeloma	RPMI8226	-
T cell leukemia	Jurkat	-
	HSB2	-
NK cell leukemia	YT	-
Myeloid leukemia	HL-60	-
	K-562	-
	U-937	-

Reactivity of CD307a with PBL

Lymphocytes	++
Granulocytes	+
Monocytes	-

INFORMATION PROVIDED BY SUBMITTER

Publications:

Du X, Nagata S, Ise T, Stetler-Stevenson M, Pastan I. FCRL1 on chronic lymphocytic leukemia, hairy cell leukemia, and B-cell non-Hodgkin lymphoma as a target of immunotoxins. Blood. 2008 Jan 1;111(1):338-43.

Patents: No

Licensed to a company and which one: No

Was it evaluated in a previous workshop? No